

Western Australia's

WILDFLOWER COUNTRY

Edition 9



WESTERN AUSTRALIA'S
WILDFLOWER COUNTRY
www.wildflowercountry.com.au





WELCOME TO WILDFLOWER COUNTRY

Experience the raw natural beauty, discover a rich pioneering history and enjoy the slower pace of life that Western Australia's Wildflower Country offers.

Located only a few hours north of Perth, immerse yourself amongst vibrant colourful carpets of wildflowers, relax under a clear country night sky filled with stars, forget the time, wake to the sound of birds chirping, breathe in the fresh air and switch off from the hustle and bustle of city life.

Wildflower Country is by far WA's best kept secret, so join us for an unforgettably unique experience...

CONTENTS

WILDFLOWER COUNTRY & MAP	4
MIDLANDS ROUTE & WILDFLOWER WAY	5
TRAVEL TIPS, SOCIAL & 4 SEASONS	6
EVENTS CALENDAR	7
THINGS TO SEE & DO	8
WALKS & TRAILS	9
MOORA	12
DALWALLINU	14
COOROW	16
GREEN HEAD & LEEMAN	18
THREE SPRINGS	20
COALSEAM CONSERVATION PARK	22
MINGENEW	24
PERENJORI	28
MORAWA	30
MULLEWA	32
GREATER GERALDTON	34
PHOTOGRAPHING WILDFLOWERS	35
WILDFLOWER CHECKLIST	35

WILDFLOWER COUNTRY

WHAT IT'S ALL ABOUT

Western Australia's Wildflower Country is the collective group of nine government areas located just north of Perth in Western Australia; Coorow, Dalwallinu, Greater Geraldton - including Mullewa, Moora, Morowa, Mingenew, Perenjori and Three Springs.

The purpose of Wildflower Country Incorporated is to promote this beautiful region as a unique and captivating tourism destination, for the collective mutual benefit of the entire Wildflower Country region.

Wildflower Country assists with collaborative destination marketing, and in producing memorable & positive visitor experiences, as well as assisting to develop the tourism industry within the area. Wildflower Season showcases an amazing display of colours throughout the region, and Wildflower Country are the experts!

INTERPRETIVE SELF DRIVE ROUTES

Wildflower Country runs from Moora in the south to Dalwallinu in the east, and from Mullewa in the north to Green Head and Geraldton in the West.

There are four main ways to explore Wildflower Country, **Wildflower Way** is the most Eastern Route or the newly formed **The Midlands Route** is the most central route, avoiding the main highways (see opposite page).

Both the Brand Highway and the Indian Ocean Drive will also lead you through to the heart of Wildflower Country & offer access to the area's wealth of attractions.

WILDFLOWERS AND LOCATIONS

For the most up to date wildflower locations and tips, be sure to contact each town's Visitor Information Centres or visit www.wildflowercountry.com.au



CONTRIBUTORS

PHOTOGRAPHIC

Daniel Wilkins Photography
Peter Nicholas (DPaW), Prue Johnson, Gail Reed, Stewart Allen, Simone Harris, Christina Laue, Peter Waterhouse, Christie Andrews, Sandie Wallace, Ellie Morris, Simon Payne, Simon Brandenburg, Carolyn Barber, Ted Jack

COVER IMAGE

Merkanooka, Morawa. Credit: Simon Payne

RACHEL WALMSLEY

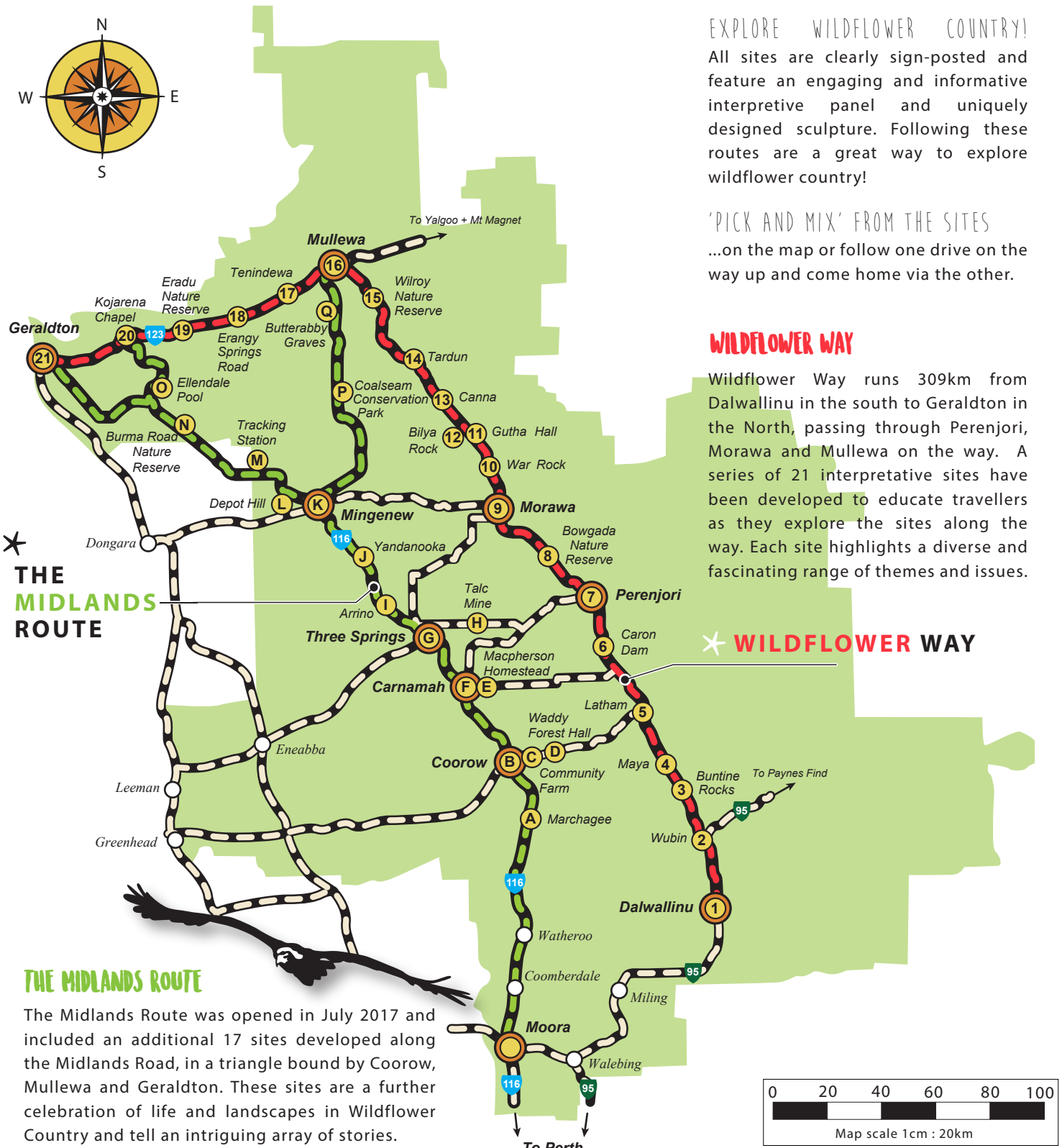
Wildflower Photography Tips & Locations
insta: @wooolly

WAYWARD NATION

Designer & Art Director
www.waywardnation.com.au
insta: @wayward.nation
facebook: Wayward Nation

ROSIE DUFFY

Editorial Director & Project Manager
e: rosieduffy12@gmail.com



EXPLORE WILDFLOWER COUNTRY!

All sites are clearly sign-posted and feature an engaging and informative interpretive panel and uniquely designed sculpture. Following these routes are a great way to explore wildflower country!

'PICK AND MIX' FROM THE SITES

...on the map or follow one drive on the way up and come home via the other.

WILDFLOWER WAY

Wildflower Way runs 309km from Dalwallinu in the south to Geraldton in the North, passing through Perenjori, Morawa and Mullewa on the way. A series of 21 interpretative sites have been developed to educate travellers as they explore the sites along the way. Each site highlights a diverse and fascinating range of themes and issues.

THE MIDLANDS ROUTE

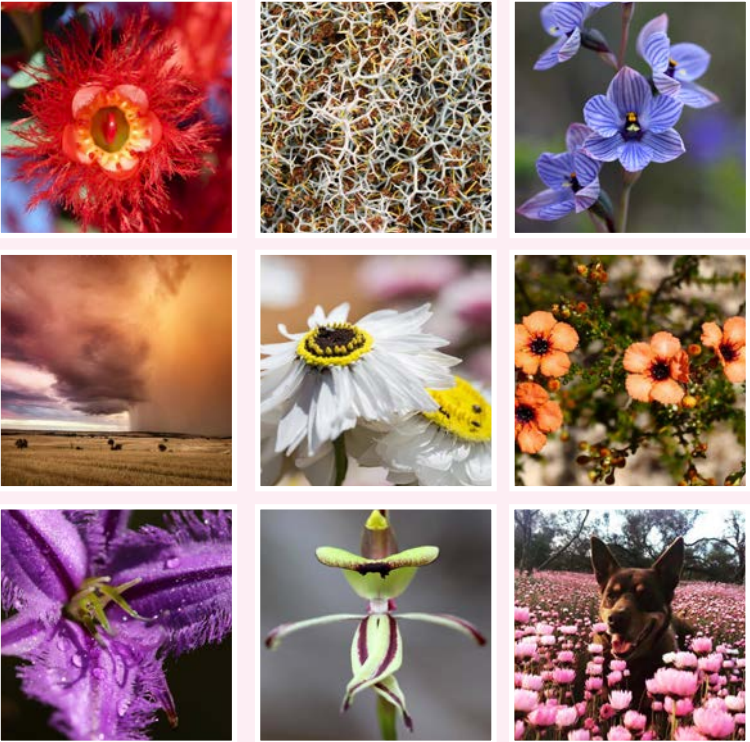
The Midlands Route was opened in July 2017 and included an additional 17 sites developed along the Midlands Road, in a triangle bound by Coorow, Mullewa and Geraldton. These sites are a further celebration of life and landscapes in Wildflower Country and tell an intriguing array of stories.

SOCIAL IN WILDFLOWER COUNTRY

#wildflowercountry

Share your journey exploring the stunning Wildflower Country & discover other amazing adventures.

Facebook: WA's Wildflower Country
Instagram: @wildflowercountry



IMPORTANT TRAVEL TIPS!

ROAD CONDITIONS

During heavy rain, some of the roads in Wildflower Country can become unsafe & impassable. Check with Main Roads or the local Shire before setting out, especially during inclement weather.
<https://www.mainroads.wa.gov.au>

BE PREPARED

Parts of Wildflower Country are remote & harsh, so if you plan to explore, ensure you are prepared. Carry ample supplies of water & fuel and always advise someone you know where you intend on going. If you become stranded, always remain with your vehicle.

ICON KEY

Throughout the publication we have utilised these symbols to indicate each location's services & amenities.



Dump Point



Hospital

Pharmacy / Chemist



SUMMER

Head to the coastal areas of Green Head & Leeman to enjoy a spot of snorkelling, paddling, 4 Wheel Driving and swimming. Be sure to keep an eye out for the popular local Sea Lion!

AUTUMN

Enjoy scenic driving through the expansive countryside. See the farmers busily putting in their crops ahead of the rain, and discover authentic Aussie country towns.



WINTER

Watch Wildflower Country come alive with the very best display of wildflowers Western Australia has to offer!

SPRING

Our stunning wildflowers are still in abundance, with many fantastic events to be enjoyed in Wildflower Country during the spring time!



Experience the very best of Wildflower Country by immersing yourself in one of the many exciting events throughout the region. Full of real outback culture, community spirit & entertainment - event information can be obtained from individual Visitor Centres, Community Resource Centres, or Shire Offices. Visit www.wildflowercountry.com.au for the most up to date event details.

EVENTS CALENDAR

JANUARY

Australia Day Celebrations
Contact individual shires for details

FEBRUARY

Perenjori's Virtual Rotto Swim
Pithara Speedway
Moora Speedway

MARCH

Geraldton Gold Cup
Mingenew Races
Moora Triathlon
Moora Speedway
Perenjori Off Road Race
Valley View Concert & Air Display

EASTER

Green Head Arts & Craft Expo

APRIL

ANZAC Day Celebrations
Contact individual shires for details
Geraldton Boat, Caravan & Camping Show
Pithara Speedway
Mullewa Midwest Golden Bowls
Moora Horse Trials
Moora Speedway
Three Springs Bowls Triples Carnival

MAY

Gateway to the Northern Bowling Tournament, Leeman
Country Arts WA Tour

JUNE

Morawa RFDS Queen's Birthday Meet
Mullewa Muster & Rodeo

JULY

Christmas in July, Geraldton
Coorow Landmark Golf Day
Pithara Speedway

AUGUST

Dalwallinu & Districts Agricultural Show
Irwin Polocrosse Carnival, Mingenew
Morawa Art Show, Aug. 2018 (bi-ennial)
Mullewa Polocrosse Carnival
Mullewa Wildflower Show
Mullewa Agricultural Show
Perenjori & Districts Agricultural Show
Pithara Speedway
Three Springs Wildflower Show
Mingenew Midwest Expo

SEPTEMBER

Big Sky Writers Festival, Geraldton
Dalwallinu Creative Arts Festival (bi-ennial)
Moora Central Midlands Agricultural Show
Morawa Speedway Season begins
Pithara Speedway
Wattle Week Festival, Dalwallinu
Western Desert Races, Three Springs

OCTOBER

Blues for the Bush, Perenjori
Relay for Life, Geraldton Greenough
Festivals of the Foreshore, Geraldton
Gravel Grinder, Moora
Moora Race Day
Moora Speedway
Pithara Speedway

NOVEMBER

HMAS Sydney II Commemorative Service, Geraldton
Melbourne Cup Day Celebrations, Geraldton
Moora Speedway
Windsurfing WA's Windsurfing Carnival, Green Head

DECEMBER

Annual Bed Race & Christmas Street Festival, Moora
Carols by Candlelight, Geraldton
Christmas Street Party, Coorow
Moora Community Carols
Geraldton Festival Race Day
Dalwallinu Lions Street Party
Moora Speedway
Mingenew Christmas Street Fair

EVENT: BLUES IN THE BUSH
Perenjori, September

THINGS TO SEE AND DO WILDFLOWERS ARE JUST THE BEGINNING.

NATIONAL PARKS + RESERVES

The spectacular variety of National Parks & Conservation Reserves within Wildflower Country ensures that visitors are guaranteed an unmatched opportunity to enjoy nature at its best. The largest range of unique flowering plants, offers a chance to view rare flora and fauna. Check out our Walks and Trails (opposite page) for more information.

CAMP UNDER THE STARS...

With numerous free camping spots throughout Wildflower Country it's the perfect place to pull up for the night and enjoy the clear country night skies. For further information on free camping locations contact individual shires via contact information in this book.

LAKES + COASTS

Enjoy a swim, snorkel, dive, kayak or surf at one of the many secluded bays along the coast in Wildflower Country. Spend the day enjoying the beauty of Dynamite Bay, voted in the Top 20 beaches of Australia in 2016. Take a Sea Lion tour to get an up close experience with these amazing marine creatures. Green Head is home to the largest colony of Australian Sea Lions in Western Australia. Check out Leeman & Green Head (pg 20) for info.

PAINTED ROADS

Many towns feature wonderful murals that depict the area's history, wildlife and culture. Many of these murals were developed as part of the 'Painted Roads' project. The project spans throughout Wildflower Country and the initiative aims to improve tourism and promote local history and natural wonders in paint. Most were painted by local volunteers. Here are a few to check out; Federation Park Mural in Moora, Past and Present in Perenjori and MacPherson's Rest in Carnamah.

WILDLIFE

At first glance, besides the obvious larger animals such as kangaroos & emus it may appear that there's not much wildlife around... That is not the case! Wildflower Country is home to various rare & endangered species that call the reserves & national parks home. Rare wildlife includes a variety of lizards, snakes, frogs & mammals. The Honey Possum is found only in the Kwongan Region (western part) of Wildflower Country, in particular the Lesueur National Park.

Birds are sometimes easier to spot & Wildflower Country offers a range of habitats for them to live in. Look out for Black-tailed Native Hens, Pink-eared Ducks and Red-kneed Dotterels that inundate the drier inland areas. Areas of mulga scrub are home to birds such as Mallee Fowl, Bush Turkey, Mulga Parrot & Black Honeyeaters. Western Corella, Red Tailed Black Cockatoo & Galahs inhabit larger trees such as Salmon Gums.

WALKS + TRAILS



MOORA

Carnaby's Cockatoo Interpretive Trail

This interpretive trail meanders along the Moore River & through Moora, allowing visitors to experience the preservation of the endangered Carnaby's Cockatoo.

Moora Town Walk

This fascinating walk trail is designed to give the visitor a taste of Moora and features historical buildings, galleries, public art pieces, and points of interest.

GREEN HEAD + LEEMAN

Leeman Foreshore

Caravan Park to Boat Ramp, 1.8 kms.

Difficulty – Easy

Three Bays Walkway

Cliff Park to Anchorage Bay jetty, 2kms.

Difficulty – Easy to Moderate

Dynamite Bay to Cambawarra Head

300m concrete trail. Difficulty - Easy.

Leeman and Green Head Coast

Enjoy a walk along one of the many secluded bays along the Leeman / Green Head coastline.

COOROW

Bart Mailey Memorial Trail

Approx 1.2kms round trip, 1km East of Coorow CRC (Visitor Centre) on Coorow Farm.

Difficulty - Moderate (if walking from town).

Coorow Farm

Approx 6km round trip, 800m from town, walk/drive/ride trail.

Difficulty - Moderate to Hard (from town).

THREE SPRINGS

Three Springs Heritage Trail

A walk along the Heritage Trail will give you a brief outline of the history of the Three Springs area, whilst also viewing wildflowers local to the area. Info board & BBQ facilities at the start of the Walk.

MINGENEW

Depot Hill

30 minutes (minimum) and take your wildflower booklets to identify the many species you will see along the way. These may include orchids, everlastings, cats paw, thriptomene, dampiera & many more. Depot Hill is accessible via the Allanoooka Springs Rd (sealed & signposted) from Geraldton to Mingenew.

Mingenew Hill Walk

1km (short walk) up the iconic Mingenew Hill. Spectacular sweeping views of the expansive countryside and well worth the journey. Some climbing involved.

Coalseam Conservation Park

Offering a range of walk trails, visitors to the Park are sure to find a perfect patch for exploring & wildflower spotting.

PERENJORI

Caron Dam Walk Trail

Rail enthusiasts will not want to miss the heritage listed Caron Coal Stage, bringing reminders of the golden age steam locomotives. Follow the trail to the pump station that is still covered by a massive corrugated iron roof. Here you can find an abundance of native orchids. (South of town) 10km. Difficulty - Easy.

People's Pathway

This is a heritage trail with a difference. An eclectic collection of 24 rusty steel characters scattered along both sides of the main street. 1.35km. Difficulty – Easy.

Monsignor Hawes Heritage Drive Trail

Perenjori's Church of St Joseph is part of this Trail in WA. Key to be collected at the Tourist Information or the Shire.

DALWALLINU

Dalwallinu Townsite Walk Trails

A series of small trails around the townsite, that can be done individually or combined to a total distance of just under 5km. Difficulty – Easy to Moderate.

MORAWA

Canna Wildflower Walk

Enjoy the wonderful wildflowers of Canna. This 30 minute walk commences at the old Canna store with brochures available to guide you. Easy - Moderate

Bilya Rock

Climb Bilya Rock and experience great views of the area, you can even add a rock to the cairn. Moderate.

Koolanooka Springs

Walk around in the carpets of everlastings after enjoying a picnic lunch. Easy - Moderate.

MULLEWA

Mullewa Bushland Trail

Along the way read about our natural heritage and indigenous culture. This trail also includes the Scenic Lookout, the best way to get an overview of Mullewa. 2.37km, approx 40 – 60 minutes. Difficulty – Moderate.

Town Heritage Trail

Discover along the way some interesting facts about Mullewa's history from days gone by. 1.1km, approx 30 – 40 minutes. Difficulty – Easy.

Rail Heritage Loop

This trail explores the fascinating history of Mullewa's Railway past. 1.72km, approx 30 – 40 minutes. Difficulty – Easy.

Wildflower Walk

This trail begins on the opposite side of the road of the Mullewa Caravan Park. This trail explores the various species of wildflowers in our region. 2.82km, approx 45-70 minutes. Difficulty – Moderate.

Monsignor Hawes Heritage Trail

590 metres. Begins at the Mullewa Town Hall and is a short walk, ending at the Church & Museum that Monsignor Hawes designed and built. Along the way learn more about this remarkable man and his life. Difficulty – Easy.

GREATER GERALDTON

Free walking tours are held throughout the year in the Chapman River Regional Park. Contact the Geraldton Visitor Centre for more information. Freecall: 1800VISITGERO

WHAT'S THAT WILDFLOWER?

A LOOK INTO SOME OF WILDFLOWER COUNTRY'S
MOST ICONIC WILDFLOWERS...
COMMON IN: MOORA, DALWALLINU & COOROW



Donkey Orchid

Scientific Name: *Diuris*

Derived from the Ancient Greek prefix *di-*, meaning "two" and *ouris* meaning "tail" referring to the hanging lateral sepals.

Description: *Diuris*, commonly known as donkey orchids, is a genus of more than sixty species of flowering plants in the orchid family, Orchidaceae and is endemic to Australia apart from one species endemic to Timor. All have mainly yellow flowers with darker markings and are thought to mimic nectar-producing flowers which open at the same time. Orchids in the genus *Diuris* are terrestrial, perennial, deciduous, sympodial herbs, usually with a few inconspicuous, fine roots and one or two tubers lacking a protective sheath. The stem is short, erect and unbranched with a leaf-like cataphyll at each node. There are between one and ten grass-like leaves at the base of the plant.

Distribution: Donkey orchids occur in all Australian states, but not the Northern Territory with one species (*D. fryana*) found in Timor.

In Western Australia, most grow in moist places such as coastal swamps or near granite outcrops. Donkey orchids usually grow as individual plants or in loose colonies and most occur at low altitudes.

Ecology: Donkey orchids are coloured like flowers that attract pollinating insects such as wasps, bees and flies but no *Diuris* produce nectar and very few have a scent. It is thought that *Diuris* species deceive insects by falsely advertising the presence of food.

MOORA

WHAT IT'S ALL ABOUT

Start your journey to discover the world famous West Australian Wildflowers in the beautiful country Shire of Moora.

Moora is located less than 2 hours drive north of Perth. It is a thriving town, strategically located between two of the State's most popular tourism attractions – New Norcia, Australia's only monastic town, and the natural wonder of the Pinnacles in Nambung National Park near Cervantes.

Moora is the largest inland service centre between Perth & Geraldton, providing services to a population catchment of 6,000 residents within a 100 km radius. Experience one of Moora's many events; Moora Triathlon, Gravel Grinder, Moora Races, weekly park run, equestrian events, Agricultural Show & speedway just to list a few!

Whether you are just passing through or planning to stop in and breathe some fresh country air, Moora has something for everyone.



Federation Park,
Moora



Miling is a quaint country town located east of Moora on the Great Northern Highway. **Watheroo** is situated north of Moora, roughly halfway between Perth and Geraldton on the scenic Midlands Road. Miling and Watheroo are welcoming and friendly communities whose focus is predominately on wheat and sheep farming in the surrounding areas. Both towns act as access hubs to Wildflower Country as travellers venture north from Perth.



BINDI BINDI / COOMBERDALE
MILING / MOORA / WATHEROO


**MOORA COMMUNITY
RESOURCE CENTRE**
Tourist Information Centre

TELEPHONE
(08) 9653 1053

WHERE TO FIND US
65 Padbury Street, Moora WA 6510

EMAIL
moora@crc.net.au
shire@moora.wa.gov.au

WEBSITE
www.moora.crc.net.au
www.moora.wa.gov.au

 Moora Community Resource Centre
& Visitors Centre

 Shire of Moora



"MUST DO" EXPERIENCES

1. ADMIRE HISTORIC BUILDINGS, MURALS & SCULPTURES.
2. WANDER THE CARNABY'S COCKATOO INTERPRETIVE WALK TRAIL.
3. PARTICIPATE IN A PARK RUN.

WILDFLOWER DRIVES

Moora Wildflower Drive "Heart of the Wildflowers"

This self drive showcases superb displays of wildflowers from August to October. Rare and beautiful species can be found along the route. Scenic views can be enjoyed and there are plenty of excellent photo opportunities. Additional maps directing the route can be found online: www.moora.wa.gov.au

WILDFLOWER LOCATIONS

Candy's Bush Reserve - Moora

Features informal walk trails, plentiful wildflowers and orchids.

Stack Cooper Reserve - Moora

Located between Stack Street and Cooper Street. Enjoy a short walk through the reserve which features interpretational signage on the local flora and fauna.


Jingemia Cave - Watheroo National Park

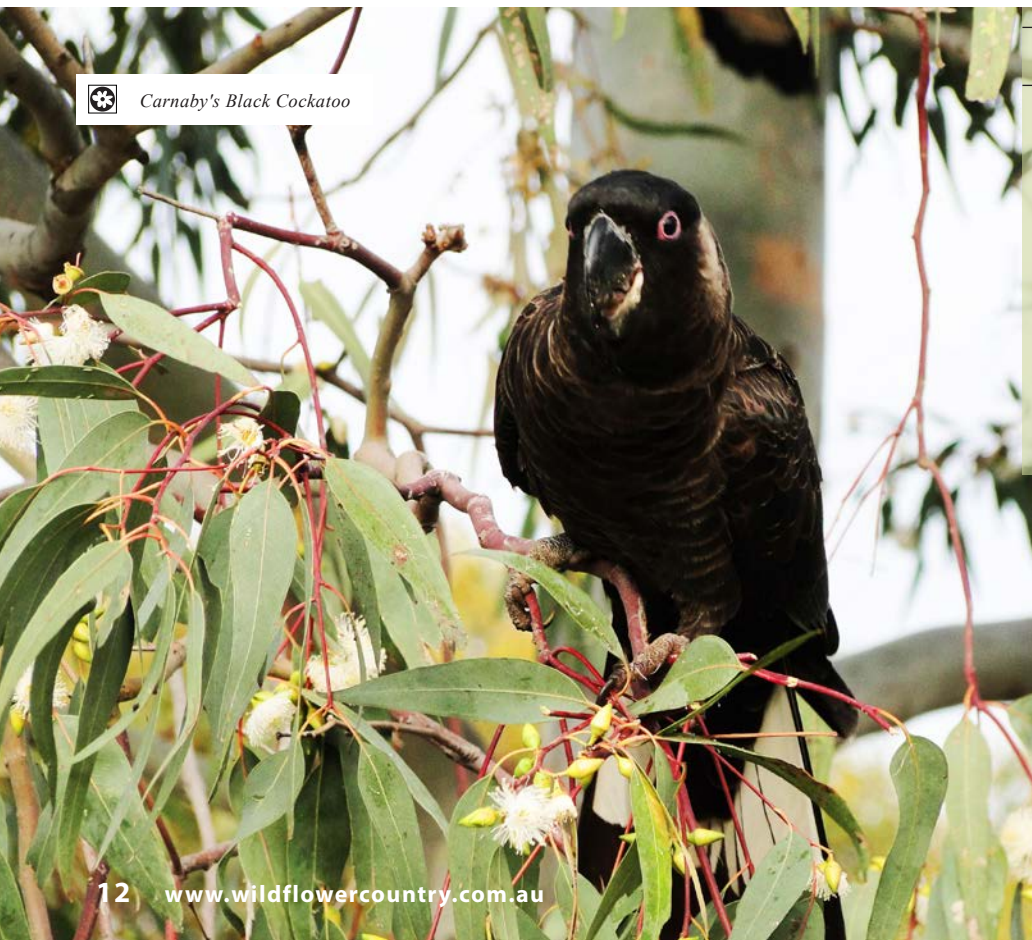
Watheroo National Park was created in 1955 and has an area covering 44,473ha. You can discover the diverse range of resilient native plants that grow there as well as regularly spot kangaroos and native birds.

The park lies on a sandy plain and is home to the extraordinary Bush Cauliflower and Scarlet Feather Flower. Nearby Jingemia Cave is a shady picnic site to be enjoyed all year round.



 *Verticordia grandis* (Scarlet Featherflower)

 Carnaby's Black Cockatoo



DALWALLINU

WHAT IT'S ALL ABOUT

Dalwallinu is a major wheat producing shire located an easy drive north-east of Perth along the Great Northern Highway. The town site also hosts a thriving industrial hub that provides goods and services to surrounding areas and throughout the state. Locals enjoy the relaxed pace of life in 'Dally' and visitors find it to be a convenient stopover point or an ideal place to base themselves for a few days and explore wildflowers in season.

As the southern end of the renowned 'Wildflower Way' - thousands of visitors are welcomed to the area each year, predominantly between July and October. Nature lovers and wildflower enthusiasts make the journey to enjoy the many unique species of plants and the beautiful displays of roadside colour. The Dalwallinu area is perhaps best known for the many varieties of wattles that grow in the shire. These golden shrubs can be seen brightening up road sides and tourist areas with their abundant yellow blossoms.

WILDFLOWER DRIVES

For those that prefer a mapped out drive, Dalwallinu has a number of self-drive routes that encompass natural attractions, good wildflower locations and some history of the area.

Heritage Wattle Trail

(approx. 88kms)

Heritage Rabbit Proof Fence Trail

(approx. 130kms)

Heritage Everlasting Trail

(approx. 101kms)

Details of suggested routes are available in the 'Visit Dalwallinu, a Place to Wait a While' brochure which is also viewable on-line.



BUNTINE ROCK

Explore the picturesque Buntine Rock...pack a picnic lunch & your camera!

"MUST DO" EXPERIENCES

1. WUBIN WHEATBIN MUSEUM

A must-see if you are visiting during Jun-Oct. Built in 1939 & heritage listed, the museum houses some wonderful history on the area, with the additional machinery annexe displaying something for everyone. Subject to volunteers the museum opens 10am-3pm daily, generally from Jun-Oct each year.

2. DALWALLINU DISCOVERY CENTRE

Admire the stunning architecture, view displays, source brochures for planning your journey and seek out the all-important local advice including the best wildflower hot spots. Open 8.30am-4.30pm Mon-Friday.

3. GET OFF THE BEATEN TRACK

Go exploring...follow a trail or design your own adventure. Kit yourself out with supplies - food, drink, maps & away you go. Release your inner child and delight at tadpoles and rock pools when you visit picnic perfect Petrudor Rocks.



DALWALLINU DISCOVERY CENTRE

Tourist Information

TELEPHONE

(08) 9661 1805

WHERE TO FIND US

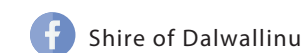
53 Johnston Street, Dalwallinu WA 6609

EMAIL

library@dalwallinu.wa.gov.au or
shire@dalwallinu.wa.gov.au

WEBSITE

www.dalwallinu.wa.gov.au



PICNIC LOCATIONS

Petrudor Rocks east of Pithara is a favourite picnic destination.

Free public BBQs are available at Memorial Park & in front of the small playground (both on Johnston St). Free BBQs and a drinking fountain are also located in the new nature playground at Richardson Park on Leahy St.



WILDFLOWERS AND LOCATIONS

Wattle (*Acacia*)

Located throughout the Shire. With so many varieties to be found you will see wattles flowering throughout many months of the year.

Orchids

It is always recommended that you get the latest updates, however when in season, an assortment of orchids can usually be found at Mia Moon Reserve, Petrudor Rocks and Buntine Rock.

Wreath Flowers

(*Lechenaultia macrantha*)

Usually found along Wubin East Rd & Goodlands Rd - but be sure to check their flowering stage with the Visitor Centre as timing can vary significantly with each season.



COOROW

WHAT IT'S ALL ABOUT

The Shire of Coorow is a study in contrasts. In the east is the red loam of farmlands first settled in the 1860s by William and Sarah Long, with the help of black trackers.

In the west are the twin coastal hamlets of Green Head and Leeman where, more than three centuries ago, the English navigator Abraham Leeman searched in vain for survivors of the Dutch ship the Gilt Dragon, only to be abandoned by his shipmates.

Coorow, the administration centre of the Shire, is a farming town, home to

about 250 people and was once the haunt of a resident bushranger who helped himself to other people's stores and horses.

Coorow boasts a delightful Town Park situated in the main street opposite the Coorow Hotel. This relatively new park lends itself to pristine surroundings including well tended gardens and a great Rotunda - relax and maybe even eat your lunch while listening to the whistle of the magpies! There is also a children's playground which is popular amongst visitors and locals alike.

"MUST DO" EXPERIENCES

1. COOROW FARM

Walk or drive the spectacular Coorow Farm Wildflower Trail.

2. BART MAILEY TRAIL

Walk the Bart Mailey Memorial Trail located at Coorow Farm Hill.

3. ENJOY A COLD DRINK!

Relax over a good meal and cold drink at the local Coorow Hotel.



 *Grevillea excelsior* (Flame Grevillea)

WILDFLOWER DRIVES

Coorow Farm
Coorow - Green Head Road
Coorow - Latham Road

WILDFLOWERS AND LOCATIONS

Coorow Farm
Everlastings, Wattle, Eucalypt, Orchids,
Blue Lechenaultia
Coorow - Green Head Road
Banksia, Scarlet Featherflower
(*Verticordia grandis*), Yellow
Verticordia, WA Christmas Tree
(*Nuytsia floribunda*), Smokebush,
Kangaroo Paw



COOROW CRC

Community Resource Centre

TELEPHONE

(08) 9952 0100

WHERE TO FIND US

12 Bristol Street
Coorow WA 6515

EMAIL

events@coorowcrc.net.au

WEBSITE

www.coorow.wa.gov.au



NATIONAL PARKS

Alexander Morrison National Park
Located 50km west of Coorow on the central west coast sandplain, and known for spectacular wildflowers during spring. Consisting of low scrub & heath on undulating sandplain hills, interspersed with rocky outcrops and small streams cut across the landscape. The best time to visit the park is winter to early summer. Wildflowers are excellent in season with tall eucalypts growing along streambeds. Mallee thickets are also quite common through the park as are heathland birds and mammals. Ranger in Charge, Watheroo N.P. (after 12 noon) ph: (08) 9952 5051 or Coorow office (08) 9952 0100

PICNIC LOCATIONS

Coorow Town Park, Main Street
(opposite Hotel)
Coorow Caravan Park, Station Street
Coorow Farm, Coorow-Latham Road
(800m east of CRC)



GREEN HEAD + LEEMAN

GREEN HEAD : WHAT IT'S ALL ABOUT

Superbly situated on a picturesque coastal headland, Green Head's pristine bays offer white sandy beaches where you can swim and snorkel, whilst the offshore islands and reefs are the perfect places for fishing and scuba diving. Fisherman's Island, south of Green Head is an Australian Sea Lion breeding colony, therefore access is restricted. Sea Lion viewing tours with government registered guides are available. These secluded little bays offer peaceful retreats for people wanting to get away from the hustle and bustle of city life. Dynamite Bay forms almost a perfect circle and offers safe protected swimming. South Bay is a long crescent, ideal for those who like the solitude of walking along a deserted beach.

The Milligan Island Camping Node hosts over 36 camp sites, shade shelters, picnic settings and long-drop toilets all within a short walk from the beach. It is perfect for a relaxing break and just a short walk/drive to the iconic bays of Green Head located just 4km south.



Enjoy natural surroundings, exceptional photography opportunities, flora & fauna, and all types of water and beach activities.

"MUST DO" EXPERIENCES

1. THREE BAYS WALKWAY
Stroll the Three Bays Walkway and take in the beauty of the coastline.
2. SPEND A DAY ON THE WATER
At one of the many secluded bays swimming, snorkelling or kayaking.
3. STOCKYARD GULLY CAVES
Embark on an exploration adventure and discover the natural beauty that is the Stockyard Gully Caves.

LEEMAN : WHAT IT'S ALL ABOUT

Leeman is a charming fishing village situated about 260km north of Perth and boasts turquoise waters, white sandy beaches and offshore islands harbouring a great diversity of marine life. This small, friendly town has excellent attractions for visitors including a picnic area, a first-class boat ramp, and tours to view sea lions and whales (in season). Dive charters and diving courses can also be arranged from Leeman. The coastline caters for an array of water activities including fishing, swimming, surfing and windsurfing. The township also supports a fishing fleet, which traverse the bountiful oceans in search of the lucrative western rock lobster during the season from November to June.

BEST SNORKELLING SPOTS!

South Bay, Herring Point
Billy Goat Bay, Dynamite
Bay, Milligan Island
Anchorage Bay &
South Leeman

LEEMAN - GREEN HEAD CRC

Tourist Information
Community Resource Centre

TELEPHONE

(08) 9953 0300

WHERE TO FIND US

2 Spencer Street
Leeman WA 6514

EMAIL

shannon@leemancrc.net.au or
gaynor@leemancrc.net.au

WEBSITE

www.leeman.crc.net.au

 Leeman Green Head
Community Resource Centre

NATIONAL PARKS

Lesueur National Park
Alexander Morrison National Park



WILDFLOWERS AND LOCATIONS

Acacias, Banksia, Hibbertia, Melaleuca
Leschenaultia, and Gastrolobium.
Lesueur National Park, Alexander
Morrison National Park & Stockyard
Gully provide exceptional viewing!

WILDFLOWER DRIVES

Coorow-Green Head Rd Drive
Lesueur Scenic Drive
Stockyard Gully Drive



 *Banksia menziesii* (Firewood Banksia)

THREE SPRINGS

WHAT IT'S ALL ABOUT

Three Springs is a beautiful little town in the heart of Wildflower Country. Renowned for its picturesque townscape and old style wheat silos, visible from all roads leading into town. The name 'Three Springs' is derived from three original water springs located to the north east, used by the early settlers and drovers for stock watering purposes.

The Yarra Yarra Lakes are located 16kms south of Three Springs and are home to various species of bird life including, swans, pelicans, ducks and the Siberian Stilt. The intermittent salt lake system provides unique scenery and is a great spot to stop and take in the view and enjoy some birdwatching.



The Wildflower Mural is a treat for traveller's eyes, and is located in the centre of town on Railway Road, the mural was painted by local artists and showcases the various wildflowers found in the area.

WILDFLOWERS AND LOCATIONS

Eucalyptus Rose Mallee

The Three Springs floral emblem is the Rose Mallee (*Eucalyptus rhodantha*), a rare species of eucalypt that flowers between April - June. It can be found around the townsite and 18km west of Three Springs along Sweetman Road.

Mica Mine Thicket (Dookanooka National Park)

Explore this large area of natural bushland including native flora and fauna located 18kms south-west of Three Springs. Please do not drive around this reserve, leave your vehicle where you first enter and enjoy the natural beauty of this area on foot. Please no camping.

"MUST DO" EXPERIENCES

1. TAKE IN THE 360° PANORAMIC VIEW @ THE TALC MINE LOOKOUT:

10km east of Three Springs lies Western Australia's first talc mine. Talc is mined by open cut method and exported for use in paper, paint and ceramic industries.

Three Springs talc is also processed in WA for cosmetics, agriculture and carving blocks. The mine is the largest Talc Mine in the southern hemisphere and the second largest in the world with an annual production exceeding 100,000 tonnes.

2. BUSH TUCKER EDUCATION

Learn about native bush tucker and native plants at the Arrino Gardens.

3. ECO - SLEEP OVER!

Spend a night at the Three Springs Eco Caravan Park

4. THREE SPRINGS HERITAGE TRAIL

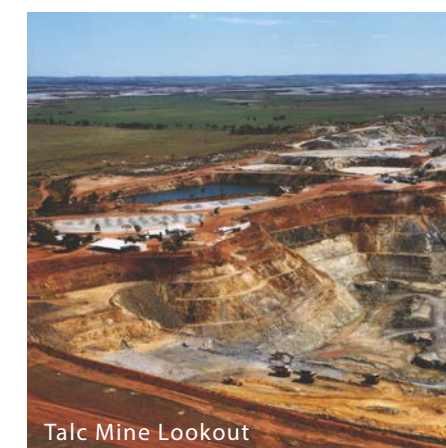
Enjoy a stroll through history and follow the townsite's Heritage Trail. Adjacent to the Heritage Trail, explore the Armoured Personnel Carrier used in Vietnam War, which was actually operated by a local RSL Member.



 *Eucalyptus rhodantha* (Rose Mallee)



Armoured Personnel Carrier



Talc Mine Lookout



'Tale & Cockie Country'

THREE SPRINGS SHIRE

Visitor Information

TELEPHONE

(08) 9954 1001

WHERE TO FIND US

Shire Office: 132 Railway Road
Visitor Centre: 118 Railway Road
Three Springs WA 6519

EMAIL

admin@threesprings.wa.gov.au

WEBSITE

www.threesprings.wa.gov.au

 Shire of Three Springs

NATIONAL PARKS

Dookanooka National Park

PICNIC LOCATIONS

There is an information board and BBQ / picnic facilities situated at the start of the Three Springs Heritage Walk.



COALSEAM CONSERVATION PARK

WHAT IT'S ALL ABOUT

Located approx. 30km north-east of Mingenew, or 60km south of Mullewa, the Coalseam Conservation Park is a spectacular spot to day visit or take the camper and stay for a few nights. The 100 year old site was the first mined coal deposit in WA, so getting its name, and exposed bands of coal seams can still be seen, revealing millions of years of geological history. Also, be sure to keep an eye out for preserved fossils throughout the area.

However what really makes this place unique and special is the annual parade of wildflowers, which come to life due to the park's diverse habitat range and location. Set between sandplains and arid country, beds of wildflowers and everlastings will keep you company as you explore the park. Camping at the historical Miners Campground for both caravans and tents are available. During wildflower season there is a three night limit.

From your camp area, walk to the Johnson Shaft Viewing Platform via the Irwin River, to see the disused coal shaft. Signage will tell the history of the mine area, which was first used in 1917.



WHAT'S THAT WILDFLOWER?

A LOOK INTO SOME OF WILDFLOWER COUNTRY'S
MOST ICONIC WILDFLOWERS...
COMMON IN: CARNAMAH, THREE SPRINGS, MINGENEW



Everlasting

Scientific Name: *Rhodanthe chlorocephala*

Rhodanthe derived from Greek Rhodon meaning "rose" and anthos meaning "a flower". Chlorocephala derived from Greek chloro meaning "green" and cephalo meaning "a head".

Commonly known as the Everlasting, Rosy Sunray, Pink Paper-daisy and Rosy Everlasting.

Description: A native Australian daisy belonging to the family Asteraceae. It is hardy, adaptable and provides a good, fast ground cover. The flowers are long-lived and dry well. An erect annual herb 20-60cm high with clumps of glabrous (hairless) grey-green stems and leaves 1-6cm in length. Everlastings have a large single flowering head at the tip of each stem. Flower heads grow to 6cm diameter, gradually decreasing as the flowering season progresses. The color of the bracts varies from deep pink (almost red) through pale pink to pure white, with a yellow or black centre.

Distribution: The Everlasting grows naturally in the south of Western Australia extending into South Australia.

Ecology: The brightly coloured bracts act as petals to attract insects such as hoverflies, native bees, and small beetles that pollinate the florets. Grasshoppers also visit the flower heads. The tiny fruits are dispersed by wind, and germinate and grow after fire or on disturbed ground. It is adaptable and ephemeral, springing up whenever conditions are right e.g. during warm, sunny weeks anytime of the year. It prefers full sun to dappled shade and grows well in open woodland. It thrives in well-drained sandy soils and tends to be smaller when grown in heavy, clay soils. Plants face a number of predators including Rutherglen bugs, kangaroos, rabbits, slugs, snails and aphids.

MINGENEW

"MUST DO" EXPERIENCES

1. SUNSET ON MINGENEW HILL

This stunning formation will amaze visitors with its incredible endless views across Mingenew's beautiful breakaway country. From all vantage points, it's a lot like overlooking a quilt of beautiful yellows and greens, with the hill itself abundant with a swathe of wildflower species. 'The Hill' is the perfect spot for a picnic lunch or a champagne sunset finish to a lovely mid-west day.

2. COALSEAM CONSERVATION PARK

Whilst Coalseam is rich with geological features and steeped in pioneering history, it's the views that will leave you in awe. Carpets of some of the most unique wildflowers in Australia cover most of the park's vast area, which is intersected by an ancient river where you can literally take a walk and find fossils dating way back in time. Coalseam is a great spot for a full day trip before winding your way back to Mingenew Springs Caravan Park for a night under the stars.

3. WILDFLOWERS AT DEPOT HILL

Whistle as you walk. Depot Hill is 'just around the corner' from Mingenew and in season is a spectacular destination for tourists and locals alike. Either side of a meandering pathway offers unparalleled access and viewing of a rich, rare and colourful assortment of wildflower species. Grab a lunch from the Mingenew Bakery, take a blanket and a camera and head off to discover one of Western Australia's true wildflower hotspots.



SHIRE OF MINGENEW

Visitor Information

TELEPHONE

(08) 9928 1102

WHERE TO FIND US

21 Victoria Street
Mingenew WA 6522

EMAIL

enquiries@mingenew.wa.gov.au

WEBSITE

www.mingenew.wa.gov.au



NATIONAL PARKS

Coalseam Conservation Park

PICNIC LOCATIONS

Cecil Newton Park
Coalseam Conservation Park
Mingenew Hill
Depot Hill

RV FRIENDLY SITES

Enanty Barn & Yandanooka Hall



WHAT IT'S ALL ABOUT

Mingenew is the true heart and soul of the mid-west's Wildflower Country. It is super close to the Coalseam Conservation Park, (arguably the holy-grail for Wildflower Hunters), is abundant in natural, amazing landscapes and most importantly, our locals are lovely!

Our Caravan Park is revered for offering both great shade and brilliant hospitality. Our sporting club, elevated high above town serves up incredible views, cold drinks and great meals after a big day of sight-seeing. The enduring experience of Mingenew is of a friendly and authentic country destination.



WILDFLOWERS AND LOCATIONS

Everlastings

Blankets of stunning Everlastings can be found at Coalseam Conservation Park, Yandanooka Hall and Mingenew Hill.

Orchids

A variety of Donkey Orchids, Snail Orchids and Spider Orchids can be spotted at Depot Hill & Yandanooka Hall.





WHAT'S THAT WILDFLOWER?

A LOOK INTO SOME OF WILDFLOWER COUNTRY'S

MOST ICONIC WILDFLOWERS...

COMMON IN: PERENJORI, MORAWA, MULLEWA



Wreath flower

Scientific Name: *Lechenaultia macrantha*

The species was first described, by Kurt Krause in 1912, using the synonymous genus name *Lechenaultia*. *Lechenaultia macrantha* is given an epithet derived from the Greek language that refers to its large flower. A common name for the plant is Wreath lechenaultia.

Description: The species, when viewed from above, has a wreath-like form during its flowering period around August to November. The prostrate habit of *Lechenaultia macrantha* is between 50 - 150mm in height and spreading out to one metre. The branches are fleshy, the leaves are narrow, linear, and up to 40mm in length. The large yellow, pink, red flowers are arranged at the terminus of branches in a ring. The diameter of the five petals is between 30-35mm.

Distribution: A species of low growing plant found on sandy or gravelly soils in Western Australia. The distribution of the species is the Geraldton Sandplains and Avon Wheatbelt regions in the southwest of WA, extending inland to the Eremaean Botanical Province.

PERENJORI

WHAT IT'S ALL ABOUT

Perenjori derives its name from the Aboriginal word "Perangery", meaning water hole, and offers all the facilities for the discerning traveller.

The four star Perenjori Caravan Park "The Best Kept Secret in the West" can provide luxury park homes and chalets, camp sites and caravan bays. A purpose built camp kitchen is an added attraction to sit around and yarn with fellow visitors. There is also a newly installed dump point for your convenience.

Make your booking through (08) 9973 1193 or 0488 731 100.

The Hotel, full of history and charm, was built in 1919 using second hand materials from Greenbushes in the

south, and is a central place to base yourself when touring the Wildflower Country. Motel accommodation and hotel rooms are available. Perenjori offers shopping, vehicle servicing, 24 hr fuel, the Wheat Bean coffee shop and postal and banking facilities.

A modern Community Resource Centre provides access to email, internet, fax, Centrelink and Medicare services. An aquatic centre provides welcome relief for travellers on a hot summer's day.

Perenjori comes alive with colour in the autumn with various types of beautiful wildflowers flourishing until late in the year. Endless vistas of pink, yellow and white everlastings are prolific from mid July to mid November on road verges

and in the bush country. The iconic & unique wreath flower can be found in select areas of the Shire. Always delighting the wildflower enthusiasts, orchids also abound in the Perenjori region. As the everlastings fade, the natural shrubs come into their own and provide the most exquisite variation and subtle hues of bloom along roads and in nature reserves.

The whole landscape comes alive with vibrant colour and the activities of bird life. Enjoy a BBQ at the gazebo, stroll amongst the beautiful parks and gardens or take a wander through the Dam Reserve for a chance to view an abundance of birds in their natural habitat.

"MUST DO" EXPERIENCES

1. PEOPLE'S PATHWAY

Take a relaxing walk along Perenjori's People's Pathway.

2. GEOFF TROTT PARK

Enjoy a picnic at the Geoff Trott Memorial Park.

3. BIRD WATCHING

Perenjori offers many peaceful locations for birdwatching, with a highlight being Dam Reserve.

WILDFLOWER DRIVES

Drive Trail

Camel Soak & John Forrest Lookout, Rabbit Proof Fence Rd

Rothsay Heritage Trail

(operating mine site since 2016)

For the more adventurous travellers you may like to try the 4WD section of the trail, this alternative route takes you the "back way" to the Rothsay Mine. More info is available from the Tourist Centre and Shire Office.

WILDFLOWERS AND LOCATIONS

Orchids

Caron Dam & Orchid Ridge

Wildflowers & Bird life


Mongers Lake Lookout

Wreath Flowers

Wanarra Road

Everlastings

Camel Soak

 *Cyathochaeta amplexans* (Dainty Blue Orchid)



Perenjori
Embrace Opportunity

PERENJORI VISITOR CENTRE

Tourist Information
(open July - October)

TELEPHONE

(08) 9973 1105

WHERE TO FIND US

56 Fowler Street
Perenjori WA 6620

EMAIL

perenjorimuseum@westnet.com.au

SHIRE OF PERENJORI

Tourist Information
(providing information in off-season)

TELEPHONE

(08) 9973 0100

WHERE TO FIND US

18 Fowler Street
Perenjori WA 6620

EMAIL

cdo@perenjori.wa.gov.au

WEBSITE

www.perenjori.wa.gov.au

 Shire of Perenjori

NATIONAL PARKS

Dam Reserve in town (bird watching)
Charles Darwin Reserve (60kms east)

PICNIC LOCATIONS

Geoff Trott Memorial Park
(outdoor fitness equipment & flying fox)
Camel Soak
Village Green (opposite Post Office)



MORAWA

WHAT IT'S ALL ABOUT

Morawa is a Shire with the scenic beauty and ambiance of a truly agricultural district only three and a half hours from the city of Perth. The shire of Morawa has many attractions, both historic and modern, that make it a wonderful and welcoming place to visit.

Undoubtedly the most popular time to visit Morawa and its surrounding region is during the wildflower season, from late winter through to early October. At this time of year caravans and campers come from far and wide to see the landscape at its most spectacular and to experience our mild winter climate.

Beyond the town boundary, you can take in carpets of wildflowers, the colours of the broadacre agricultural crops and the Koolanooka mine, but there is also plenty to see within the Morawa townsite.

The Morawa Museum's historic windmill collection is the only large, public display in the whole of Australia and the historic buildings scattered throughout town tell their own tales. There are public art displays, the Morawa Town Square and numerous other things to do and places to visit, not to mention a more than welcoming local community.

 Spider Orchid

WILDFLOWERS AND LOCATIONS

Wreath Flower
Carpets of Pink & Yellow Everlastings
Bright Pink Native Foxgloves
Many species of Orchids
Grevillea

A stunning array of wildflowers can be found at Canna Reserve and Koolanooka Springs, with Wreath Flowers being found on the Morawa Yalgoo Road.

WILDFLOWER DRIVES

Pop in to the Visitor Centre or Shire Office for a detailed map of wildflower drives in Morawa.

 Wreath Flower

"MUST DO" EXPERIENCES

1. KOOLANOOKA SPRINGS

Enjoy a picnic lunch at Koolanooka Springs & keep an eye out for native animals and wildflowers.

2. TOWNSITE OF CANNA

Spend the day exploring the townsite of Canna, pack your walking shoes & take one of the many walk trails through Canna Reserve.

3. MORAWA MUSEUM

Discover the history of the district at the Morawa Museum, which houses a truly remarkable collection of windmills, as well as fantastic examples of vintage farm machinery and equipment.

4. MONSIGNOR HAWES HERITAGE TRAIL

Visit the Holy Cross Catholic Church and Priests Cell. One of fifteen Monsignor Churches in the Midwest & Murchison.



SHIRE OF MORAWA

Tourist Information

TELEPHONE

(08) 9971 1204

WHERE TO FIND US

Winfield Street, Morawa WA 6623

EMAIL

admin@morawa.wa.gov.au

WEBSITE

www.morawa.wa.gov.au



Shire of Morawa

MORAWA VISITOR CENTRE

Tourist Information (open July-October)

TELEPHONE

(08) 9971 1421

FREE WIFI

Main Street near the Morawa Visitor Centre and at the Caravan Park.



Morawa CRC

PICNIC LOCATIONS

Koolanooka Springs
Canna Town Site
Morawa Town Square
Bilya Rock



MULLEWA

WHAT IT'S ALL ABOUT

Mullewa is the Northern gateway to Wildflower Country and has long been known for the stunning displays of everlastings and flowering shrubs along roadsides and in surrounding nature reserves of the district. Two of the five Walk Trails in Mullewa are dedicated to wildflowers and are located in the outskirts of the town centre. Of the many flowering specimens in the district, the wreath flower (*Lechenaultia macrantha*) is the star attraction of the

annual Mullewa Wildflower Show, held over four days in the middle of Spring Wildflower Season (usually late August / early September) at the Mullewa Town Hall. A dazzling array of wildflowers are on display. The Mullewa Agricultural Show is also on at this time, either the last Saturday of August or first Saturday of September. This annual event includes the prestigious foot race; the Mullewa Gift, a spectacle not to be missed, and the Quick Shear competition.

With considerable prize money for both, these events attract many outside competitors. Another annual event not to be missed is the Mullewa Muster & Rodeo. Since inception in 2012 this event has grown considerably each year and is now known as one of the best Rodeo's and Country Music Concerts in the Midwest. Held on the WA Day long weekend each year; early June or late May, see www.mullewamuster.com for additional information.

WILDFLOWER DRIVES

The Northern Loop (115km) + The Southern Circuit (145km)

Two newly-developed drive trails are available from Mullewa; The Northern Loop and The Southern Circuit which take in the area's natural beauty, outlying areas and unique historical and geographical features. Also stopping at special locations such as the Coalseam Conservation Park and the fascinating Bindoo Hill, a glacial moraine where ice smoothed rocks dropped as the face of the glacier melted around 225 million years ago.

The historical Butterabby Graves, where three Aborigines were hanged and buried for the spearing of a shepherd, is also included in the scenic drives. Each site features a creative rusty steel sculpture with an interpretive panel to explain the main story associated with the place. A number have picnic tables and fire-rings, and all roads can be driven in standard 2WD vehicles (with care on unsealed sections). Both trails are well sign posted so there is no risk of losing your way!

De Grey Stock Route

This heritage trail follows the route first gazetted in 1905, commencing at the mouth of the De Grey River and finishing at Mullewa. The trail takes in three of the southern-most government wells and a natural watering hole, Hughie Rocks.

The full range of scenic self-drives are available in a comprehensive brochure through the Mullewa Community Resource Centre or the Mullewa District Office situated on the corner of Thomas & Padbury Streets.

"MUST DO" EXPERIENCES

1. CHURCH & PRIEST HOUSE

Discover the Church & Priest House Museum, designed & built by priest / architect Monsignor John Hawes.

2. HISTORICAL DRIVE TRAILS

Embark on one of the local self drive trails, depicting Mullewa's local history.

3. SUNRISE / SUNSET

Catch a sunrise or sunset (or even both) at the scenic lookout, after walking the Bushland Trail.



MULLEWA COMMUNITY RESOURCE CENTRE

Tourist Information (open Feb - Dec)

TELEPHONE

(08) 9961 1500

WHERE TO FIND US

Cnr Maitland Rd & Jose St
Mullewa WA 6630

EMAIL

admin@mullewacrc.net.au

WEBSITE

www.visitgeraldton.com.au/surroundings/mullewa.aspx

Mullewa Community Resource Centre



WILDFLOWERS AND LOCATIONS

Everlastings
Throughout the entire shire!

Wreath Flowers
Pindar



GREATER GERALDTON

WHAT IT'S ALL ABOUT

Geraldton is the perfect place to begin or end your wildflower adventure with many thousands of visitors utilising the Geraldton Visitors Centre as their first port of call. Overlooking the Indian Ocean, Geraldton enjoys mild winters making it the ideal base for all things wildflowers - including the Geraldton Wax! With pristine beaches, rolling hills, stunning landscapes and a spectacular foreshore you'll be surprised at what you'll find in Geraldton.

Accommodation, gorgeous gift shops, great cafes and the access hub to the Abrolhos Islands and Wildflower Country. Other activities include the HMAS Sydney II Memorial decorated with glorious gardens, the Museum of Geraldton, St Francis Xavier Cathedral designed by Monsignor Hawes, as well as five heritage walks capturing Geraldton's bygone era. The foreshore offers boardwalks and paths to explore the Batavia Coast, Marina north and down to the Esplanade South with cafes, galleries, art and boutique shopping in between.

WILDFLOWERS AND LOCATIONS

Chapman River Regional Park

In the heart of Geraldton lies a place of significant value, the Chapman River Regional Park, detailing the beauty of native flowering plants, birds and animal life framed by sweeping vistas of the Moresby Range and out across the Indian Ocean.

The river follows the Geraldton Fault where Greenough sandstone meets Tamaia limestone resulting in over 300 species of native plants, some of which occur nowhere else. Walk or cycle, take a picnic or kayak from the pontoon of Kempton Street.

Mills Point Lookout

Only 7kms east of the North West Coastal Highway on the Chapman Valley Road, the Mills Point Lookout offers spectacular views across the Chapman Valley to the east and Geraldton to the west. An abundance of wildflower species come to life during the season including Dampiera, Grevillea pinaster, Hibbertia and Melalueca.



GERALDTON VISITOR CENTRE

Visitor Information
Open 7 days a week
(excl. Christmas Day & Good Friday)

TELEPHONE

Freecall: 1800VISITGERO

WHERE TO FIND US

246 Marine Terrace
(Original Railway Station)
Geraldton WA 6530

EMAIL

info@visitgeraldton.com.au

WEBSITE

www.visitgeraldton.com.au

Geraldton Visitor Centre



WILDFLOWER CHECKLIST

Wildflower Country is home to one of the most diverse and colourful range of plants in the world. From fields of everlastings to the diverse flowering plants. You will continue to be amazed.

The western and southern section of Wildflower Country is one of the world's richest flora areas - and home to acres of shrubby vegetation known to Aborigines as "kwongan", a dense mixture of different plants, including the scarlet flowers of the staghorn bush, the soft grey of smokebush and the pink and yellow of verticordias.

The eastern and northern Wildflower Country is a complete contrast, with carpets of Everlastings, the unique and distinctive Wreath Flower as well as the bright orange wild pomegranate, bright pink native foxgloves, many species of orchids, grevillea, acacia, purple darwinia and dampiera, thryptomene, smokebush, woody pear, cassias, eremophila, blue cornflower and yellow bells.

Take your time, pull over & wander amongst the many reserves & areas of native bushland, with 1000's of flowering plants on offer you won't be disappointed...

- ☐ **EVERLASTINGS**
(*Schoenia cassiniana*)
- ☐ **POMS POMS**
(*Cephalopterum drummondii*)
- ☐ **DONKEY ORCHID**
(*Diuris porrifolia*)
- ☐ **WREATH FLOWER**
(*Lechenaultia macrantha*)
- ☐ **SPIDER ORCHID**
(*Caladenia varians*)
- ☐ **YELLOW PLUME GREVILLEA**
(*Grevillea eriostachya*)
- ☐ **BLUE CORNFLOWER**
(*Centaurea cyanus*)
- ☐ **COWSLIP ORCHID**
(*Caladenia flava*)
- ☐ **TWINING FRINGELILY**
(*Thysanotus pattersonii*)
- ☐ **JAM WATTLE**
(*Acacia acuminata*)



SHARE YOUR PHOTOS!

while exploring Wildflower Country via Facebook or Instagram. We love seeing images from travellers!

#wildflowercountry

Facebook: @wildflowercountrywa

Instagram: @wildflowercountry



TOP WILDFLOWER TIPS

TAKE NOTHING but photos. Picking wildflowers is illegal and can attract a \$2000 fine.

RESPECT private property and don't trespass.

PROTECT Canola crops and prevent the spread of disease by staying out of canola fields.

PHOTOGRAPHY TIPS

Moora local & our very own Wildflower enthusiast, Rachel Walmsley, shared some tips on how to capture the perfect Wildflower picture:

1. Any camera will do. You don't need a fancy camera or be a professional to take good wildflower photos - you can take great shots just with a phone camera. Angle & light are the most important tips. Having a camera on the auto setting will help select the best settings, and most cameras have a good built-in macro setting - which will be automatically selected on "Auto". Take multiple shots from different angles.

2. Pick your light. Bright sunny days are good for landscape but not always useful for close ups, especially with shiny flowers. Orchids are photographed best in the morning or afternoon light on a sunny day.

3. Take it slow & get down to ground level. A lot of flowers are tiny and are at ground level in amongst other plants so you might miss them if you're rushing past.

4. Watch your feet. Stick to the paths where possible. If venturing off-track then be wary of your feet when searching, you might be treading on a precious wildflower.

5. Have fun, spot something new every year. Don't try and find everything at once, save some for the next trip. Ask at the local visitor centres for best location advice. Join an online forum such as the WA Wildflower Society Facebook page - offering info, photos and knowledge to help ID your flora.

TOP THREE DRIVER SAFETY TIPS

Avoid Driving at dawn & dusk

If you must, slow down and stay alert.

Remember to take regular breaks

Take a break from driving, keep fresh by pulling over to admire the wildflowers!

Awareness of other road users

Drive and pull over with awareness of other road users, road trains, vehicles towing and large slow-moving agriculture machinery.



MID WEST INDUSTRY
ROAD SAFETY ALLIANCE

www.wildflowercountry.com.au 35

R E N G E D R S E N J P T H P A O M O R A Y W A A
 E W R T C O P O M E E V N C H W N W C L R R E V L
 S R E H F L L O R O J E V E I M E G R E D E A W A L E V E N K
 P R I T H L L O R O J E V E I M E G R E D E A W A L E V E N K
 I E F C L L O R O J E V E I M E G R E D E A W A L E V E N K
 Y L A L L O R O J E V E I M E G R E D E A W A L E V E N K
 O W T O L L O R O J E V E I M E G R E D E A W A L E V E N K
 T E H N K L L O R O J E V E I M E G R E D E A W A L E V E N K
 L R M E Y D L L O R O J E V E I M E G R E D E A W A L E V E N K
 E N O U O R D L L O R O J E V E I M E G R E D E A W A L E V E N K
 R A S G C O R D L L O R O J E V E I M E G R E D E A W A L E V E N K
 P A S I C H O R D L L O R O J E V E I M E G R E D E A W A L E V E N K
 C S I C H O R D L L O R O J E V E I M E G R E D E A W A L E V E N K
 H T R I D I A R E E E N J P T H P A O M O R A Y W A A
 I R P D I A R E E E N J P T H P A O M O R A Y W A A

DONKEY ORCHID
 WREATH FLOWER
 THREE SPRINGS

EVERLASTING
 JAM WATTLE
 DALWALLINU

PERENJORI
 MINGENEW
 GERALDTON

COOROW
 MOORA
 MULLEWA
 MORAWA

